

Guildford Borough Council
Borough, Economy and Infrastructure Executive Advisory Board on Monday, 31 October 2016

LATE SHEET

This page is intentionally left blank

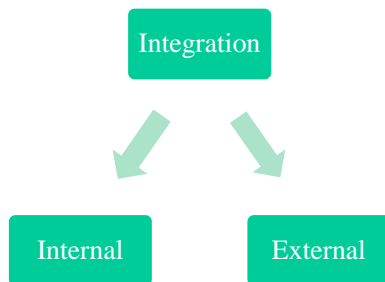
Integrating Community Care Services

John Martin
Head of Health & Community Care Services

Corporate Priorities

- Embed our community care services into the wider elderly integrated care partnership
- Help shape and improve future health and social care services by playing an active role with partners in the Guildford and Waverley Better Care Fund Board.

Integrating Services



What is integrated care?

Health and adult social care professionals working more closely to provide care in a more co-ordinated way.

Patients receive the right kind of care in the right place at the right time.

In Guildford and Waverley the operating model is set out in the document 'My care, my choice'.

Why Integration?

Those over 65 in Guildford and Waverley is expected to grow by 21% in the next ten years.

The number of older people living with long-term health problems, such as diabetes or heart disease, will increase significantly.

We need to plan to meet these needs - a range of health and adult social care services.

Why integration?

- NHS (2015/16) £2.45 Billion deficit
- SCC £190 Million deficit

The Surrey Landscape

- 1 County Council
- 11 Boroughs/District Councils
- 5 Acute Hospital Trusts
- 1 Mental Health Trust
- 3 Community Care Providers
- 129 GP Surgeries
- Wide range of voluntary sector and other providers

What benefits are expected?

New ways of working that:
Allow partners to overcome obstacles caused by working in isolation
Reduce repetition
Seamless transition between services.

Who is involved in Guildford?

- GP practices in Guildford and Waverley
- Royal Surrey County Hospital NHS Foundation Trust
- Surrey and Borders Partnership NHS Foundation Trust
- NHS Guildford and Waverley Clinical Commissioning Group
- Virgin Care Ltd.
- Surrey County and Guildford Borough Councils
- Voluntary Sector
- Private and public sector
- Care providers and other contributors to health and social care

How is it being taken forward in Guildford (and Waverley)

This is set out in the 'My Care, My Choice' model.

The aim is to support frail older people in the community because:

They account for a high volume use of social care, acute and community health services;

Are more likely to have complex needs

System redesign will support them in regaining or retaining independence in the local community

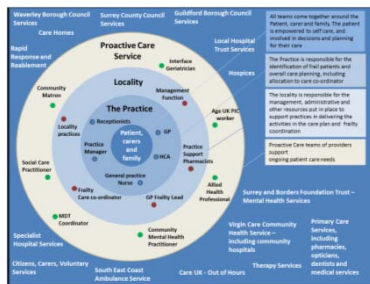
Implementation

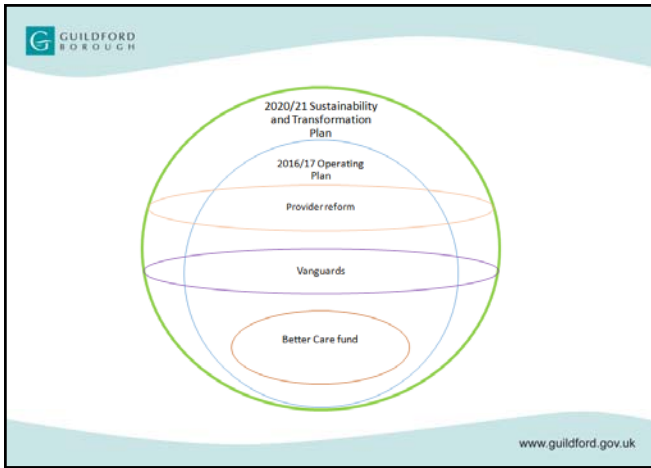
For people with the most complex needs, locality Multi Disciplinary Teams have been created:

- Guildford East
- Guildford Central
- North Guildford

Bring together health and social care professionals to provide a holistic view

My care my choice model





Sustainability Transformation Plans (STP's) – what are they?

A new planning framework for NHS services (guidance issued 22 December 2015).

- Local blueprint for delivering the ambitions NHS bodies have for transformed services
- based on a 'place' footprint rather than single organisations, covering the whole population in this footprint
- cover October 2016 to March 2021
- cover the full range of health services from primary care to specialist services, and local government provision
- Transformation pot of £2.1bn rising to £3.4bn by 2021.

www.guildford.gov.uk

STP - Guildford

www.guildford.gov.uk

Our key services.

- Meals on Wheels
- Community Transport
- Day Centres
- Elderly Mentally Infirm Day Centres
- Sheltered Housing
- Community Alarm network
- Handyperson
- Care and Repair
- Voluntary Sector Funding
- Housing - Planning

Key Services

Service	Discretionary/ Statutory	Controllable costs	Capital and support costs	SCC funding	Income (Fees and Charges)	Net cost
West Hub	D	725,420	341,160	53,100	136,800	607,380
Central Hub	D			69,300		
EMI - Meadows	D	147,080	32,100		36,500	99,200 (25,820)
EMI - Four Seasons	D				49,300	
Meals on Wheels	D	822,620	69,600	26,188	253,052	604,580
Community Transport	D			8,400		
TOTAL		1,695,120	222,860	242,788	731,840	1,186,140

Internal changes

- Major service changes
- Later Life Strategy
- Integrated booking/information system for Community Transport and Meals on Wheels
- EMI Units
- Assessment Unit

Partnership working

- Community Co-Ordinator – Guildford Diocese
- Community Angels – Guildford Diocese
- SCC Adult Social Care Team based in Millmead Offices
- Assessment Unit at Park Barn Centre
- Japonica Court – GP surgery
- Community Asset database

GWBCF Board

- Membership of the Guildford and Waverley Better Care Fund Board
- Membership of the Guildford and Waverley Integrated Care Board

The Future

- Service efficiencies
- More partnership working
- Possible Care Services Trading Company

Discussion Issues

- What role does the Council wish to play in future? Less or More.
- Should the Council seek to integrate budgets within the Better Care Fund
